

## PenMount 6202C Control Board Data Sheet

### RoHS Compliance

PenMount 6202C Control Board integrated features and functions for 4- and 5- wire resistive touch screens; both USB and RS-232 interface with auto-detection; complemented by the superbly developed PenMount drivers with auto installation driver capability.

PenMount 6202C Control Board uses PenMount 6010 controller that has been designed for those who may like all-in-one solution with 12bit A/D converter built-in to make the total printed circuit board denser. PM6202C was designed-in with two kinds of connector. One is connected with touch screen directly for 4-wire or 5-wire selective. Another is supported to both of RS232 and USB interface.

### Specifications:

Touch Screen	For 4- or 5-wire analog resistive touch screens	
Interface	USB	Full speed 12MHz bps
	RS232	9600 baud rate non-PnP mode
Touch Screen Controller	PenMount 6010 controller IC	
Resolution	4096 x 4096 (Maximum)	
Dimension holes	(L)70.0mm x (W)20.0mm x (H)10.3mm (max), two 3.0 φ screw	
Connector	ZIF connector or Wafer connector on board for touch screen	
Diagnostic	LED on board	
Cursor accuracy	< 1% (Active Area Diagonal of touch screen with PenMount Advanced calibration utility support)	
Resistance range	30 ~ 1.3K ohm	
Operating Voltage	+5V DC	
Power Consumption	Standby Mode : 9 mA ; Active Mode : 53 mA (VCC=+5V, Touch Panel Resistance: 95 ohm) Note. Actual current will be different by touch panel's resistance.	
Electro Static Discharge	Air Discharge 15KV , Contact Discharge 8KV	
Storage Temperature	-40 °C ~ 85 °C	
Operating Temperature	-20 °C ~ 85 °C	

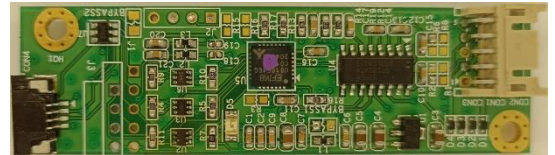
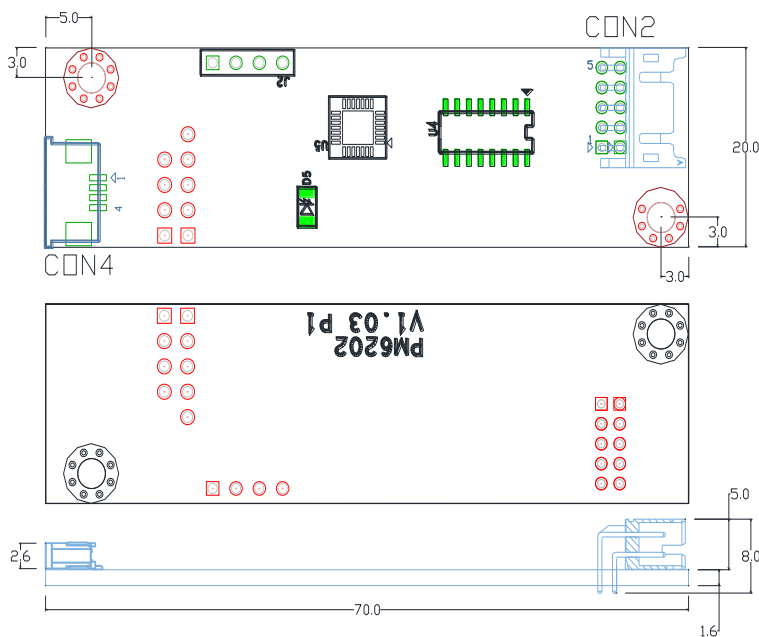
### Driver Software:

**RS232 interface:**DOS, Windows 2000/ XP/ XPE/ 2003/ 2008/ Vista/ 7 /8 /10 /11, WinCE 4.2/ 5.0/ 6.0/7.0, Linux (Kernel 2.6 and X-Window mode), QNX 6.2/ 6.3/ 6.4/ 6.5

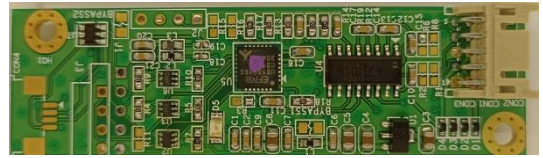
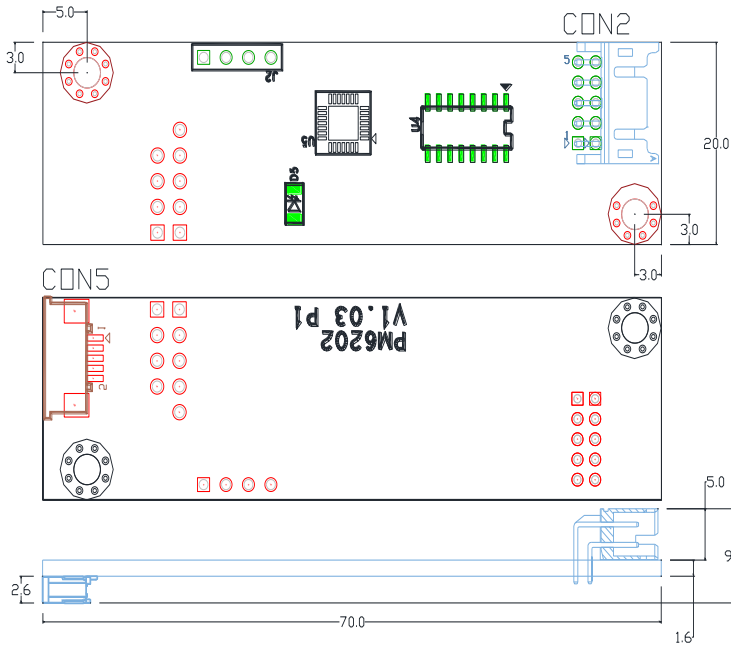
**USB interface :** Windows 2000/ XP/ XPE/ 2003/ 2008/ Vista/ 7 /8 /10 /11, WinCE 4.2/ 5.0/ 6.0/7.0, Linux OS (Kernel 2.6 and X-Window mode), QNX 6.4.1/ 6.5 (Inbox support)

### Mechanical Drawing:

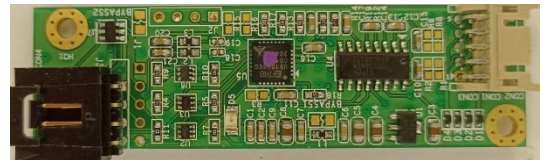
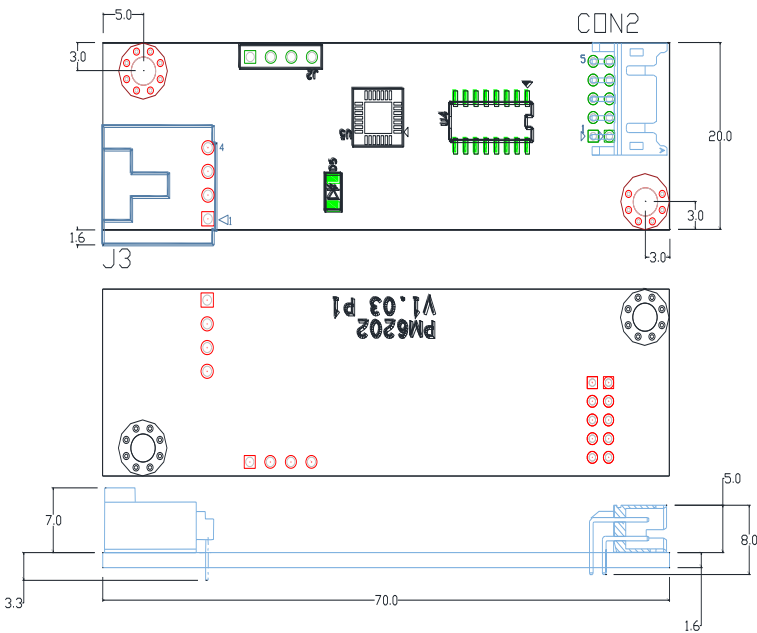
PM6202C-CZ4



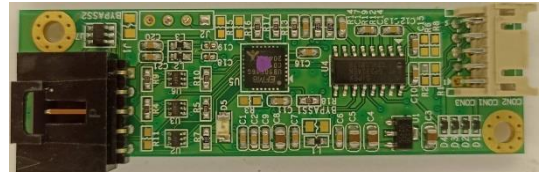
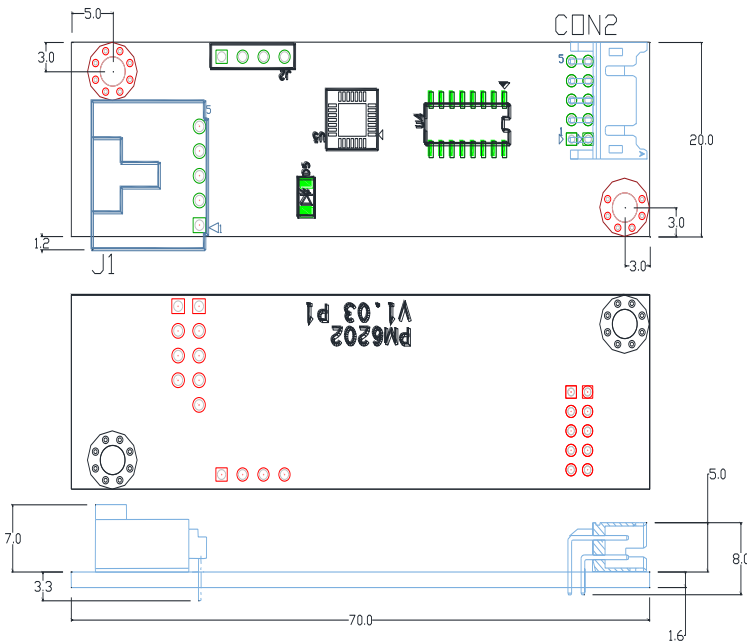
PM6202C-CZ5



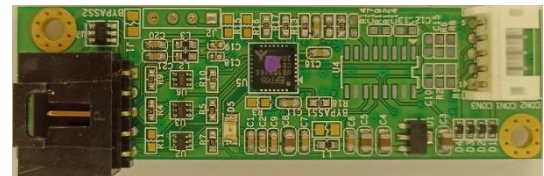
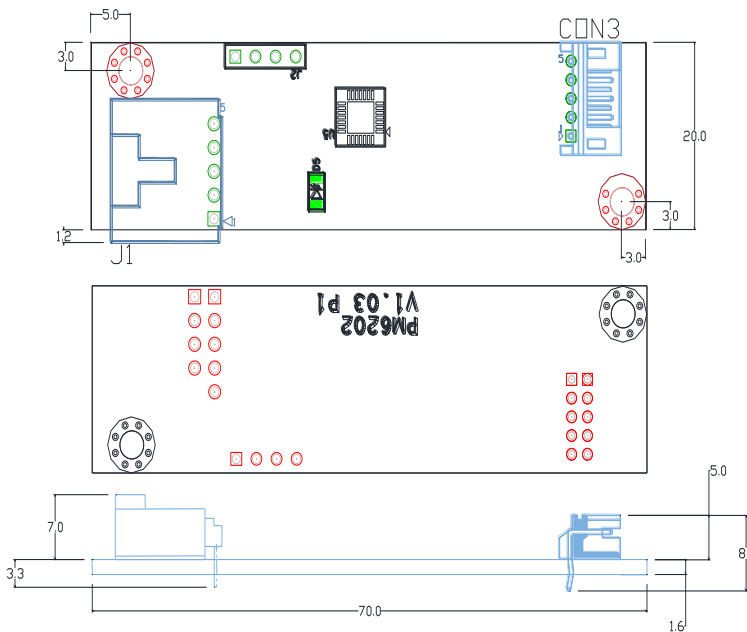
PM6202C-CW4



PM6202C-CW5



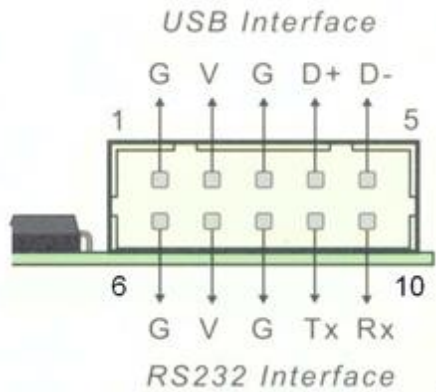
PM6202C-UW5



**Connector and Jumper definition:**

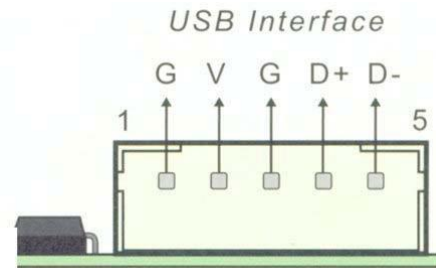
CON2: (PM6202C-CW4/CW5/CZ4/CZ5)

For USB and RS-232 Interface:



CON3:(PM6202C-UW5)

For USB Interface:



J1 / J3 / CON4 / CON5:

Connect to 4- and 5-wire Touch Screen:

	J1 / CON5 (5-wire)	J3 (4-wire)	CON4 (4-wire)
PIN 1	UL (Y)	Top	Top
PIN 2	UR (H)	Left	Left
PIN 3	Sense (S)	Bottom	Bottom
PIN 4	LL (L)	Right	Right
PIN 5	LR (X)	N/A	N/A

The available PM6202C control board :

- PM6202C-CZ4 : 4-wire, ZIF Connector pitch 1.0mm (Dual side) ; RS232 & USB COMBO Interface.
  
- PM6202C-CZ5 : 5-wire, ZIF Connector pitch 1.0mm (Dual side) ; RS232 & USB COMBO Interface.
  
- PM6202C-CW4 : 4-wire, Wafer Connector pitch 2.54mm ; RS232 & USB COMBO Interface.
  
- PM6202C-CW5 : 5-wire, Wafer Connector pitch 2.54mm ; RS232 & USB COMBO Interface.
  
- PM6202C-UW5 : 5-wire, Wafer Connector pitch 2.54mm ; USB Interface.