

PenMount 6200F8 Control Board Data Sheet

RoHS Compliance

PenMount 6200F8 Control Board integrated features and functions for 4/8 wire resistive touch screens; both USB and RS-232 interface with auto-detection; complemented by the superbly developed PenMount drivers with auto installation driver capability.

PenMount 6200F8 Control Board uses PenMount 6010 controller that has been designed for those who may like all-in-one solution with 12bit A/D converter built-in to make the total printed circuit board denser. New design divides the screw holes into system ground and the earth, for providing more flexible integration applications. Increased two layer ESD protection structure, to achieve better ESD protective effect. There are four connectors on this board. J1 connects to USB. J2 is for 4/8 wire touch screen via extension cable. JP3 supplied the power for RS232 interface. JP4 connects to RS232 interface.

Specifications:

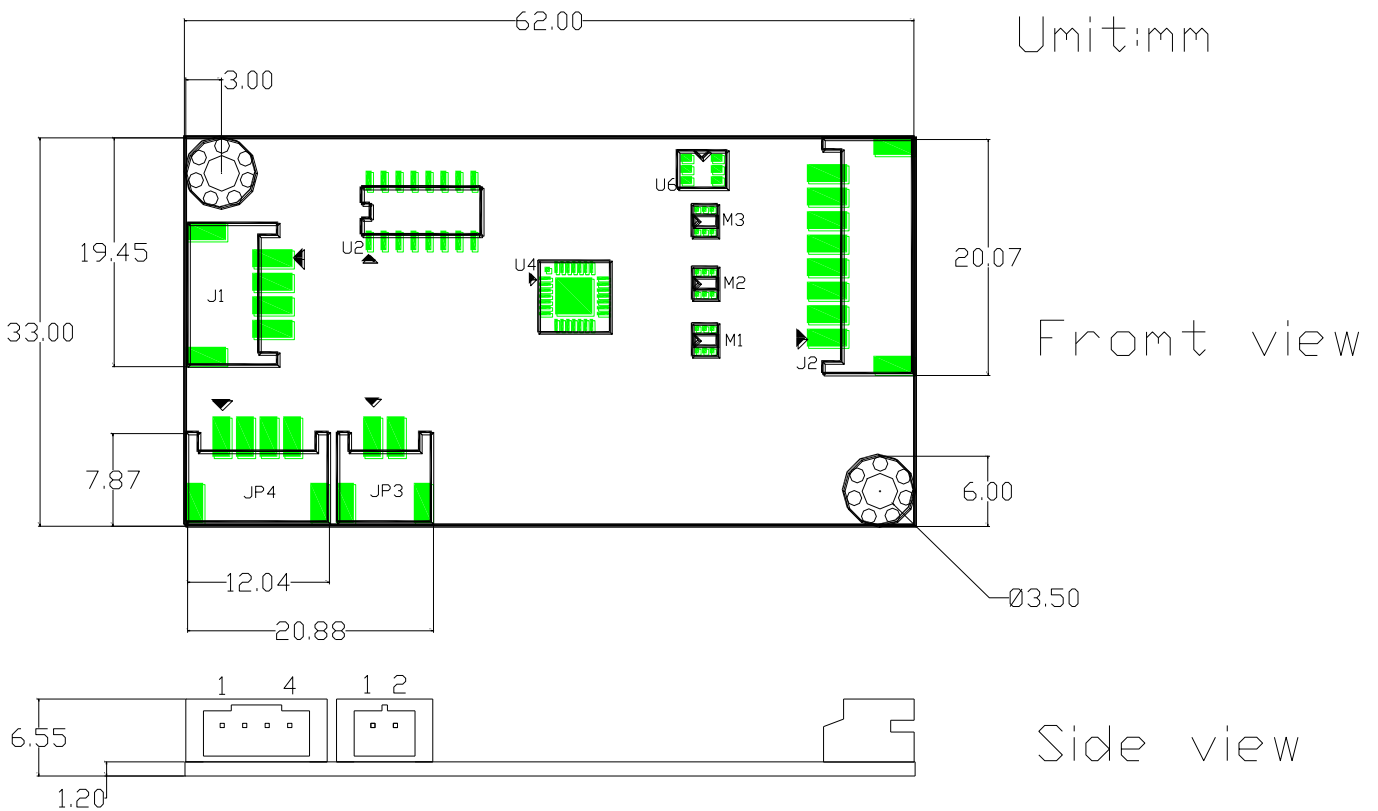
Touch Screen	For 4, 8-wire analog resistive type	
Interface	USB	Full speed 12MHz bps
	RS232	19200 baud rate PnP mode
Touch Screen Controller	PenMount 6010 controller IC	
Resolution	4096X4906 (Maximum)	
Size	62.0 x 33.0 mm, two 3.5 φ screw holes	
Cursor accuracy	< 1% (Active Area Diagonal of touch screen with PenMount Advanced calibration utility support)	
Diagnostic	LED on board	
Resistance range	50 ~ 1.3K ohm	
Operating Voltage	+5V DC	
Electro Static Discharge (ESD)	Air Discharge 15KV Contact Discharge 8KV	
Storage Temperature	-40 °C ~ 85 °C	
Operating Temperature	-20 °C ~ 85 °C	
Power Consumption	Standby Mode : 7 mA ; Active Mode : 52 mA (VCC=+5V, Touch Panel Resistance: 95 ohm) Note. Actual current will be different by touch panel's resistance.	

Driver Software:

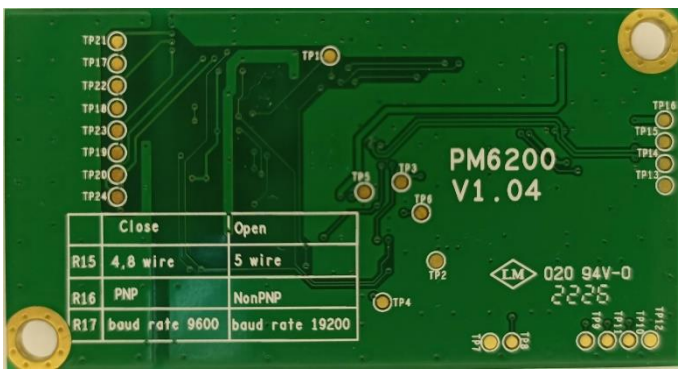
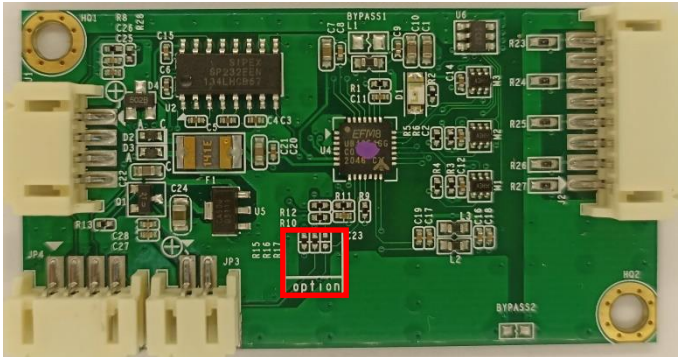
RS232 interface : DOS, Windows 2000/ XP/ XPE/ 2003/ 2008/ Vista/ 7 /8 /10 /11, WinCE 4.2/ 5.0/ 6.0/7.0, Linux (Kernel 2.6 and X-Window mode), QNX 6.2/ 6.3/ 6.4/ 6.5

USB interface : Windows 2000/ XP/ XPE/ 2003/ 2008/ Vista/ 7 /8 /10 /11, WinCE 4.2/ 5.0/ 6.0/7.0, Linux OS (Kernel 2.6 and X-Window mode), QNX 6.4.1/ 6.5 (Inbox support)

Mechanical Drawing:



PM6200F8 supports 4/8 wires touch panel, R15 is mounted in the circuit.



Connector Definition:

J1: Connect to USB:

PIN 1	VCC
PIN 2	D-
PIN 3	D+
PIN 4	Ground

JP4 : Connect to RS232:

PIN 1	Ground
PIN 2	TXD
PIN 3	RXD
PIN 4	RTS

JP3 : Power Connector for RS232

PIN 1	+5V DC
PIN 2	Ground

J2: Connect to 4/8 wire Touch Screen:

	PM6200F8	
	4 Wire	8 Wire
PIN 1	Top	Top
PIN 2	N/A	Top Sense
PIN 3	N/A	Bottom Sense
PIN 4	Bottom	Bottom
PIN 5	Left	Left
PIN 6	N/A	Left Sense
PIN 7	N/A	Right Sense
PIN 8	Right	Right